

Better Health, Brighter Future



About **50,000 employees** are working in **more than 80 countries** to bring better health and a brighter future for patients worldwide.

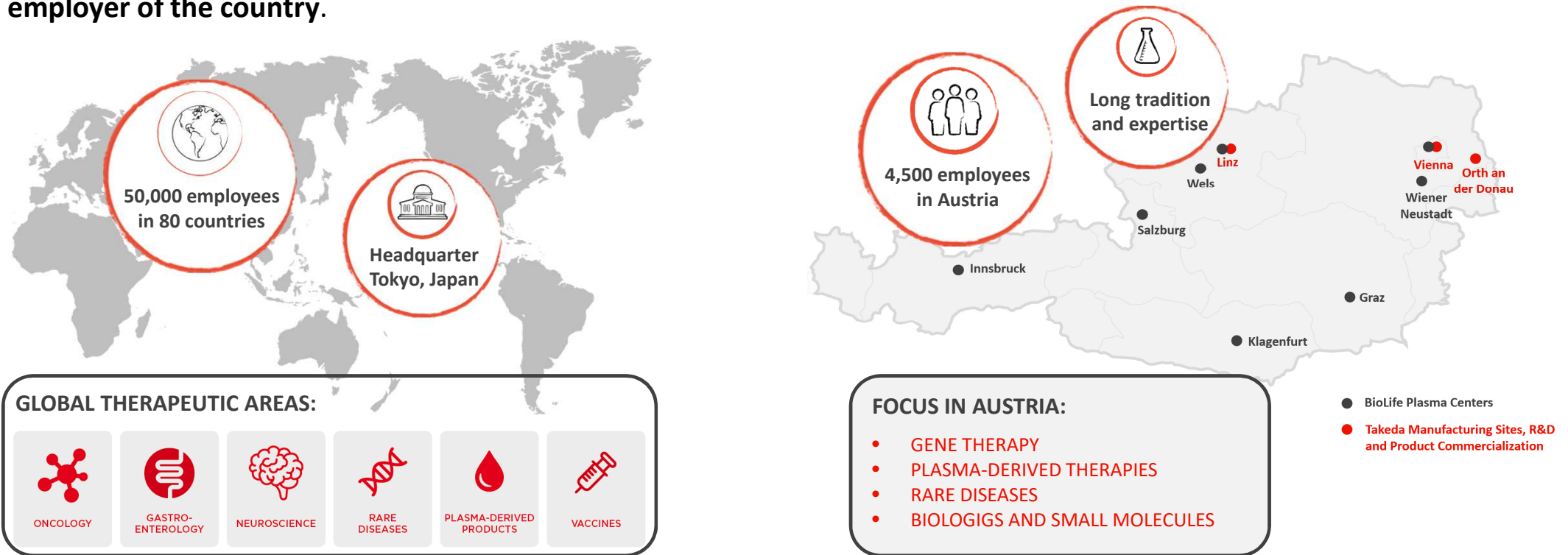


Who we are



Takeda is a patient-centric, innovation-driven global pharmaceutical company that builds on a distinguished 238-year history, aspiring to bring **better health and a brighter future** for people worldwide.

In **Austria** around 4,500 employees work along the **entire value chain**. Takeda in Austria is the **largest pharmaceutical employer of the country**.



In **Takeda** we have a strong commitment to **environmental sustainability**.

Environmental sustainability commitment begins with our EHS policy

Better Health, Brighter Future 

Global Environment, Health and Safety Policy

Purpose
The purpose of this policy is to describe Takeda's commitment with regard to the Environment, Health and Safety (EHS) of our patients, our people, our partners, and our world.
Our Global EHS Policy is grounded in Takeda's core values of integrity, fairness, honesty and perseverance that guide us in fulfilling our responsibility to society as a global pharmaceutical company. At Takeda, we are committed to operating our business in a manner that protects the health, safety and wellbeing of our employees, communities in which we work, live and serve, as well as the environment and its natural resources. This is how we support our business priorities and mission of creating better health and a brighter future for patients worldwide.
This policy has been developed to address Takeda's purpose, vision, organizational context, nature of our health and safety risks and opportunities and the environmental impacts of our activities and products.

Scope
This Policy applies globally to Takeda directors, officers, employees, contractors, and affiliates for which we have operational control. In cases where this Policy conflicts with applicable laws, regulations or industry codes, the most restrictive requirements shall apply.

Key Principles
We believe **placing patients first** means recognizing that risks to our natural environment also pose risks to global health.
- We enhance the performance of our operations, products, and services to maximize positive environmental opportunities and minimize negative environmental impacts.
- We advance environmental sustainability and reduce natural resources through water stewardship, waste minimization, sustainable transportation, production & procurement practices.

We believe **trust with society begins with trust**
- We adhere to the highest levels of health and safety to protect patients and the public and to recognize potential for risk.
- We provide the tools, resources and programs to support our employees.
- We embed EHS values into Takeda's culture through leadership and employee engagement.
- We ensure the participation and consultation of our stakeholders in developing and improving our processes.
We believe **the monitoring and reporting of our open sustainability issues**
- We work with our business partners, suppliers, contractors and developing relationships.
- We actively engage with stakeholders to ensure that we do and best practices that serve to protect the present environment.

We believe **complying with all applicable EHS laws and regulations**
- We maintain systems designed to identify, manage and ensure continued EHS compliance and control.
- We establish measurable goals and objectives to assess and communicate results.

Compliance
Compliance with this Global Policy is subject to monitoring, evaluation and global updates prior to the transaction.



We believe **placing patients first** means **recognizing that risks to our natural environment** also pose risks to global health

- We enhance the performance of our operations, products, and services by proactively identifying **pollution prevention** opportunities and **minimizing negative environmental impacts** throughout the entire **lifecycle** of our products.
- We advance **environmental sustainability** and reduce our impact on **climate change** by promoting the conservation of **natural resources** through **water stewardship**, **waste** minimization, recycling, **energy** conservation, reduction of **greenhouse gas emissions**, sustainable **transportation**, protection of **biodiversity**, responsible product stewardship and **sustainable procurement** practices.

https://www.takeda.com/siteassets/system/csr/environment/global-ehs-policy_20190801.pdf

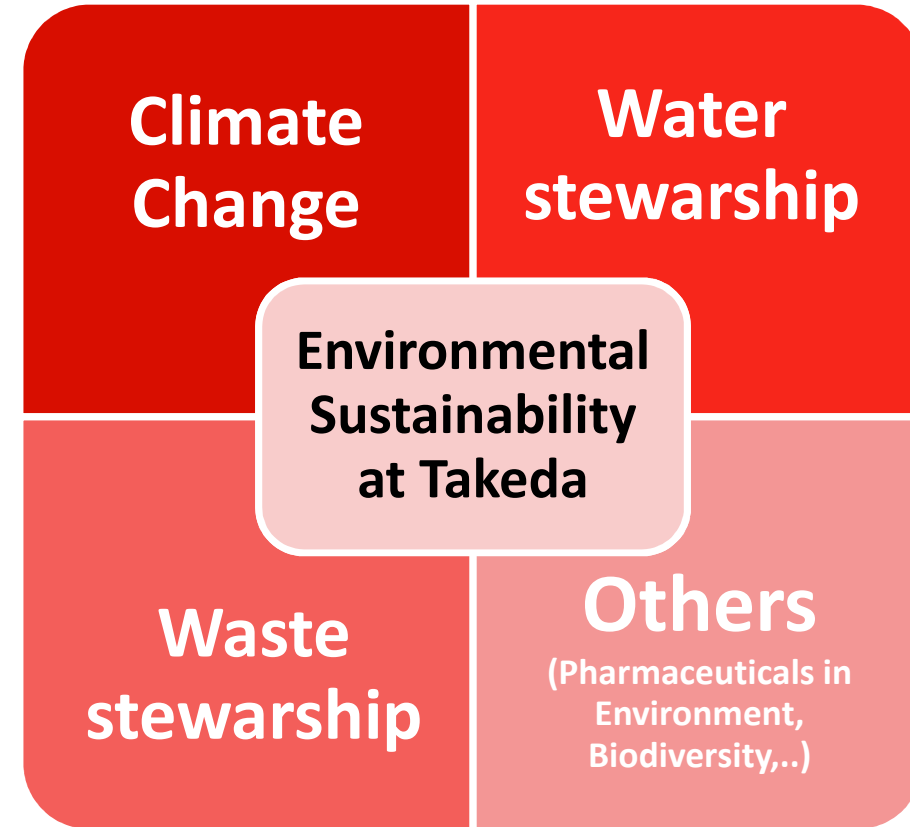


New Global EHS Policy at Takeda issued in Aug 2019

Our program approach...



Alignment with the United Nations' Sustainable Development Goals



Our values of Takeda-ism and Patient, Trust, Reputation, and Business guide us in our commitment to **protect the environment and our patients**



Our Commitment to Carbon Neutrality

OUR TARGETS

IN 2020

Takeda will become carbon neutral beginning with FY2019 greenhouse gas emissions through the purchase of renewable energy and verified carbon offsets

BY 2025

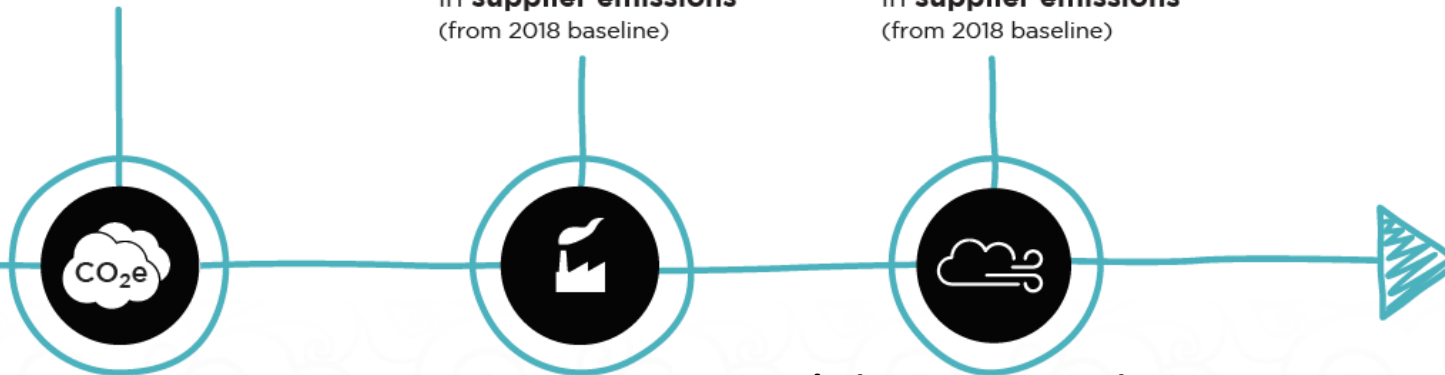
40% reduction of greenhouse gas emissions from our operations (from 2016 baseline)

15% reduction in supplier emissions (from 2018 baseline)

BY 2040

100% reduction of greenhouse gas emissions from our operations
-That's zero carbon emitted from company operations that we control

50% reduction in supplier emissions (from 2018 baseline)



Takeda commits also that suppliers representing 2/3 (~350 suppliers) of our FY2018 Scope 3 emissions will institute science-based GHG reduction targets by 2025.

Takeda's Position on Climate Change

Key messages
Takeda supports the Paris Agreement and international efforts to keep climate change well below 2°C above pre-industrial levels.

The changes brought on by climate change are a threat to global public health. As a global biopharmaceutical company committed to bringing Better Health and a Brighter Future to people worldwide, protecting the environment and climate is an integral part of that commitment.

Takeda is committed to ambitious action to prevent and mitigate the effects of a changing climate and has set a goal of becoming a carbon neutral organization, inclusive of all emissions throughout our value chain by 2040.

Background
The most recent Intergovernmental Panel on Climate Change (IPCC) report indicates that the world is heading towards a significant rise in global temperatures that will have a destabilizing effect on the social, environmental, and economic structures that we rely on. We are on course for profound change and are already seeing the consequences of climate change through extreme weather, rising sea levels, diminishing sea ice and biodiversity loss. The international community came together and reached a consensus on preventing the most serious impacts of climate change in what is known as the Paris Agreement endorsed in November 2016.

Takeda's Position
Takeda supports the Paris Agreement and its global goal to keep climate change well below industrial levels and ideally, below 1.5°C. The changes in temperature and precipitation brought about by climate change threaten global public health through increased exposure to heat wave events, extreme weather, greater transmission of vector-borne diseases, declining food security, and diminishing biodiversity. We recognize that the changes brought on by climate change have the potential to disrupt our facilities and supply chain.

Protecting the climate is aligned with our purpose to bring Better Health and a Brighter Future to



https://www.takeda.com/siteassets/system/who-we-are/companyinformation/positions-guidelines/takeda_position_climate_change_2020.pdf



Manfred Rieger
Site Head of R&D Austria
manfred.rieger@takeda.com



Takeda in Austria

Industriestraße 67
1221 Vienna

www.takeda.at

Follow us on [YouTube](#) and [LinkedIn](#)